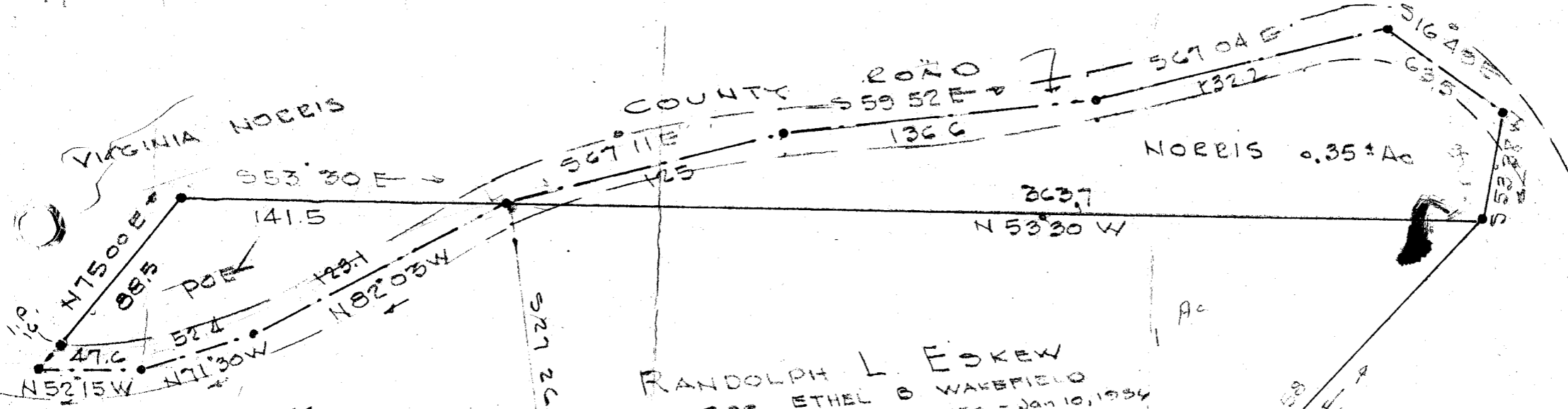
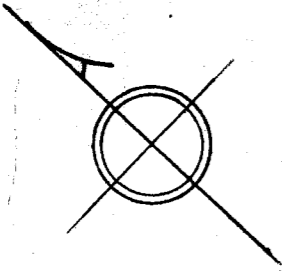


Rec.



RANDOLPH L. ESKEW
see ETHEL B. WATERFIELD
PLAT BY C. C. JONES - Jan 10, 1954

L. M. POE
Property of
WILLIAM MAXWELL, DONOR
VIRGINIA NORRIS
GREENVILLE, S. C.
SCALE 1" = 60' OCT 1956

FILED
GREENVILLE CO. S. C.
FEB 5 11 32 AM 1958
OLLIE FARMWORTH
R. M. C.

FEB 5 1958

2911

C. C. JONES & ASSOCIATES
ENGINEERS
GREENVILLE, S. C.

PP-55

79 11 Filed This 5 day of Feb. 1958
And Recorded in Vol. P.P. Page 55 at

Oddie
Register Meane Conveyance Greenville County, S. C.